



INSTAGRIP with
**COMFORT
CUSHION**

20 / 28
MIL / MIL

Part of the Complete
ComfortCushion™ Collection

InstaGrip 20 ComfortCushion™ InstaGrip 20 Tile ComfortCushion™

InstaGrip 28 ComfortCushion™ InstaGrip 28 Tile ComfortCushion™



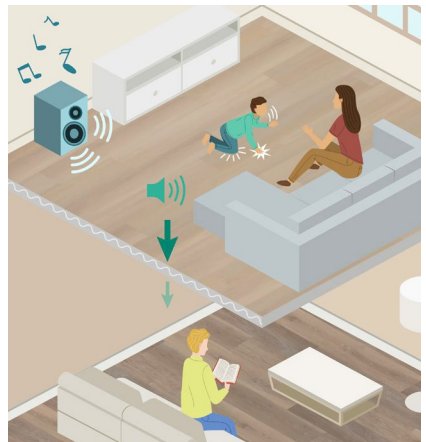
THE BEST FLOORING FOR SENIOR AND ASSISTED LIVING

ComfortCushion™ is designed specifically for senior and assisted living facilities, offering comfort underfoot and built to withstand high-traffic areas with its durable construction and rubber backing. Its one-part installation process saves both time and money by eliminating the need for a separate underlayment. ComfortCushion™ fills a market gap by providing a high-performance, LooseLay flooring solution with an integrated noise-reducing cushion, perfectly suited for the unique needs of senior living environments.



QUIETLY TRANSFORMING MULTI-UNITS

ComfortCushion™ features an integrated noise-reducing cushion that mitigates sound transfer, making it perfect for senior living spaces and other multi-story commercial environments. By improving acoustic properties compared to traditional LVT, this product creates a quieter, more peaceful living environment. Designed for high-traffic areas, it offers both sound insulation and durability in one easy-to-install solution.



QUIET COMFORT, BOLD DURABILITY

DURABLE, ELEGANT, BUILT FOR PERFORMANCE

InstaGrip with ComfortCushion™ is an innovative flooring solution that combines Urban Surfaces' premium LVT InstaGrip™ lines with an integrated cushion for superior sound insulation and underfoot comfort. This versatile product ensures easy, cost-effective installation for demanding applications like multi-family housing, senior living, and hospitality.



With Grip-Tec technology, ComfortCushion™ and its backing outperform conventional EVA-backed products by offering:

- Durability
- Ease of maintenance
- Sound mitigation
- Cushion with each step

Ideal for high-performance commercial settings, InstaGrip with ComfortCushion™ eliminates the need for separate underlayment, streamlining labor while delivering beauty, comfort, and long-lasting resilience.

Special Order

ComfortCushion™ is a Special Order flooring option. Special Order products are manufactured precisely to fit your unique project requirements with lead times reflecting the highest quality and care.

Talk to your representative for details.

A REVOLUTIONARY SOLUTION FOR TRUE LOOSELAY



LooseLay couldn't be easier. Traction Subfloor Grip Coating™ provides fast and easy LooseLay installation without adhesive. This revolutionary subfloor coating provides the horizontal grip strength of an adhesive with none of the permanence. Installed planks can be replaced by hand in seconds, and there is no damage to the flooring or subfloor. Traction also provides priming and up to 90% moisture protection.

COMFORT CUSHION

THE ART OF TOUGH, THE SCIENCE OF SOFT

InstaGrip with ComfortCushion™ is an innovative flooring solution that combines premium LVT with an integrated cushion for superior sound insulation and underfoot comfort. This versatile product offers easy, cost-effective installation, exceptional durability, and superior sound mitigation, making it ideal for demanding commercial applications.

Specifications

Product Type	Luxury Vinyl Tile (LVT)
Core Material	3.25mm Virgin Vinyl
Fiberglass Reinforced	FiberMax
Overall Thickness	4.5mm (0.177")
Finish	Enhanced Polyurethane System
Attached Underlay	Integrated 1.25mm ComfortCushion™
Edge Profile	Beveled Edge
Recommended Adhesive	3545 Traction Subfloor Grip Coating 3020 Everlast Hard-Set Adhesive

All LooseLay ComfortCushion™

InstaGrip 20 ComfortCushion™

Nominal Size	9" x 60"
Actual Size	228.6mm x 1524mm
Wear Layer	20mil ScratchGuard
Embossing	Natural Wood Texture

InstaGrip 20 Tile ComfortCushion™

Nominal Size	16" x 32"
Actual Size	406.4mm x 812.8mm
Wear Layer	20mil ScratchGuard
Embossing	Elegant Tile Texture

InstaGrip 28 ComfortCushion™

Nominal Size	9" x 48"
Actual Size	177.8mm x 1219.2mm
Wear Layer	28mil ScratchGuard
Embossing	Natural Wood Texture

InstaGrip 28 Tile ComfortCushion™

Nominal Size	36" x 36"
Actual Size	914.4mm x 914.4mm
Wear Layer	28mil ScratchGuard
Embossing	Natural Stone Texture

Warranty

Residential	20mil	28mil
Light Commercial	Lifetime	Lifetime
Heavy Commercial	20 Years	Lifetime
	10 Years	20 Years



FOR MORE
INFO

800.492.8722

Sales@UrbanSurfaces.com

Designed and Developed in the USA